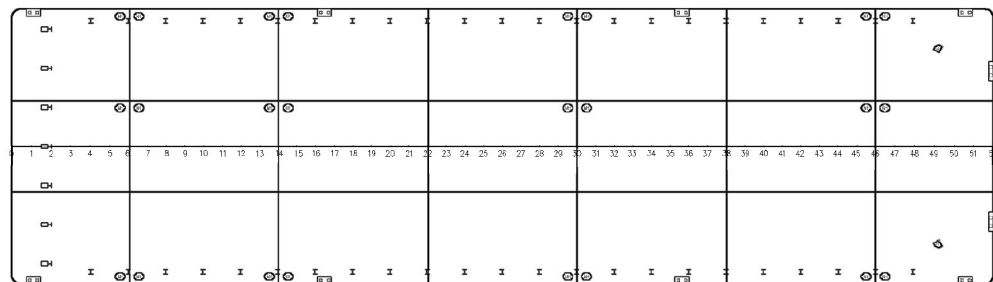
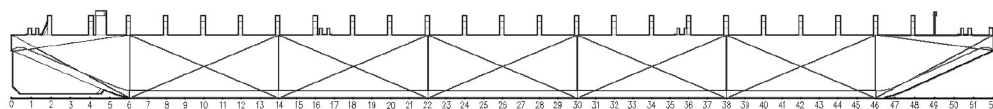




FRANKLIN 2501 DECK CARGO BARGE

REGISTRY	: SINGAPORE
CLASSIFICATION	: BUREAU VERITAS (BV)
YEAR BUILT	: 2006
OFFICIAL NO.	: 392282
LENGTH	: 73.15m
BREADTH	: 21.34m
DEPTH	: 4.88m
GRT / NRT	: 1998 / 599
DECK PLATE	: 14mm
BULKHEADS	: TWO LONGITUDINAL & SIX TRANSVERSE
DECK LOADING	: 15Tonne/m ²
DECK FITTING	: 1 SET NAVIGATION LIGHT STANDS 1 ANCHOR C/W HAND WINCH STANCHIONS FITTED



FRANKLIN 3302 DECK CARGO BARGE

REGISTRY	: SINGAPORE
CLASSIFICATION	: AMERICAN BUREAU OF SHIPPING (ABS)
YEAR BUILT	: 2007
OFFICIAL NO.	: 393822
LENGTH	: 96.59m
BREADTH	: 27.43m
DEPTH	: 6.1m
GRT / NRT	: 4370 / 1311
DECK PLATE	: 18mm
BULKHEADS	: THREE LONGITUDINAL & NINE TRANSVERSE
DECK LOADING	: 15Tonne/m ²
DECK FITTING	: 1 SET NAVIGATION LIGHT STANDS 1 ANCHOR C/W HAND WINCH

