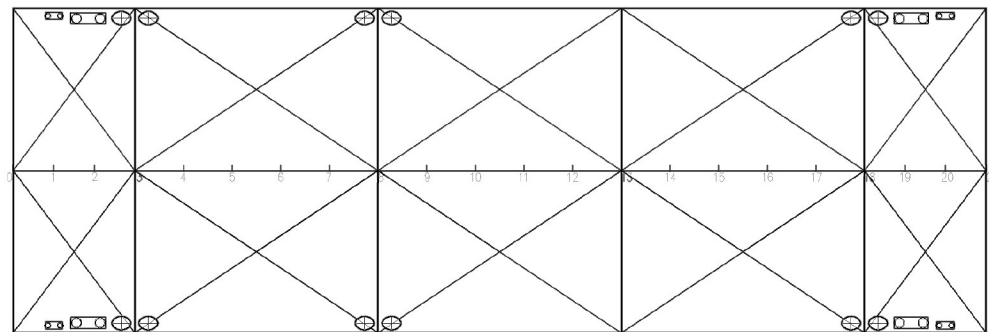
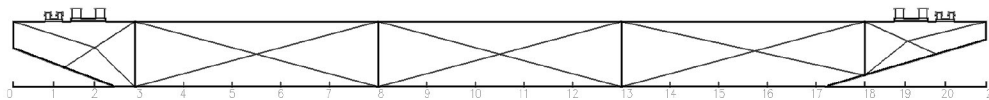




FRANKLIN 10 DECK CARGO BARGE

REGISTRY	: SINGAPORE
CLASSIFICATION	: GERMANISCHER LLOYD + 100 A 5 PONTOON
YEAR BUILT	: 2005
OFFICIAL NO.	: 391653
LENGTH	: 35.11
BREADTH	: 12.192m
DEPTH	: 2.44m
GRT / NRT	: 259 / 78
DECK PLATE	: 10mm
BULKHEADS	: ONE LONGITUDINAL & FOUR TRANSVERSE
DECK LOADING	: 4Tonne/m ²
DECK FITTING	: 1 SET NAVIGATION LIGHT STANDS 1 ANCHOR C/W HAND WINCH



FRANKLIN 11 DECK CARGO BARGE

REGISTRY	: SINGAPORE
CLASSIFICATION	: GERMANISCHER LLOYD + 100 A 5 PONTOON
YEAR BUILT	: 2005
OFFICIAL NO.	: 391654
LENGTH	: 67.3m
BREADTH	: 19.51m
DEPTH	: 4.27m
GRT / NRT	: 1481 / 445
DECK PLATE	: 12mm
BULKHEADS	: TWO LONGITUDINAL & SEVEN TRANSVERSE
DECK LOADING	: 10Tonne/m ²
DECK FITTING	: 1 SET NAVIGATION LIGHT STANDS 1 ANCHOR C/W HAND WINCH STANCHIONS FITTED

