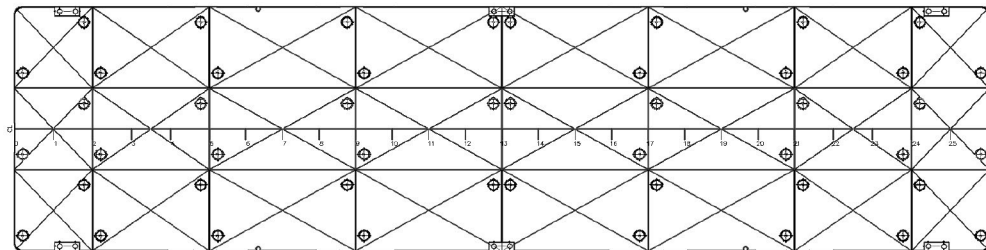
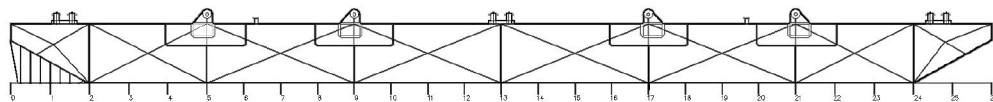




FRANKLIN 2001 TEST BARGE

REGISTRY	: SINGAPORE
CLASSIFICATION	: AMERICAN BUREAU OF SHIPPING (ABS)
YEAR BUILT	: 2008
OFFICIAL NO.	: 394539
LENGTH	: 60m
BREADTH	: 15m
DEPTH	: 3.6m
GRT / NRT	: 823 / 247
DECK PLATE	: 15mm
BULKHEADS	: TWO LONGITUDINAL & SEVEN TRANSVERSE
DECK LOADING	: 15Tonne/m ²
DECK FITTING	: 1 SET NAVIGATION LIGHT STANDS 1 ANCHOR C/W HAND WINCH
MAXIMUM TEST WEIGHT	: 2500Tonne



FRANKLIN T2801 DECK CARGO / TEST BARGE

REGISTRY	: SINGAPORE
CLASSIFICATION	: AMERICAN BUREAU OF SHIPPING (ABS)
YEAR BUILT	: 2009
OFFICIAL NO.	: 395946
LENGTH	: 76.13m
BREADTH	: 23.18m
DEPTH	: 5.5m
GRT / NRT	: 2565 / 769
DECK PLATE	: 12mm
BULKHEADS	: TWO LONGITUDINAL & EIGHT TRANSVERSE
DECK LOADING	: 15Tonne/m ²
DECK FITTING	: 1 SET NAVIGATION LIGHT STANDS 1 ANCHOR C/W 10Tonne HAND WINCH
MAXIMUM TEST WEIGHT	: 4400Tonne
LIFTING CAPACITY	: 6600Tonne

